



## HOSPITAL VISITING HOURS

Noon - 8:00 pm  
(maximum of 2 healthy visitors at a time)

**Maternity:** 24 hours (immediate family)

**Critical Care:** 24 hours (immediate family)

**Ambulatory Care:** 7 am - 7 pm  
(those accompanying patient)

## THE SUMNER FAMILY CAFE

Breakfast: 6:30 am - 9:30 am

Lunch: 11:15 am - 1:30 pm

Dinner: 5:00 pm - 6:30 pm

## THE AUXILIARY COFFEE SHOP

Mon-Fri: 8:30 am - 8:00 pm

Sat & Sun: 9:00 am - 4:00 pm

## THE AUXILIARY GIFT SHOP

Mon-Fri: 9:00 am - 7:30 pm

Sat & Sun: 11:00 am - 3:00 pm

*Waiting rooms are cell phone safe areas. Cell phones are prohibited where patients are present.*

## Security

The Windham Hospital security officers are here to ensure your safety, 24 hours a day. They provide escorts after dark and can assist with flat tires, locating auto services, or parking questions. To reach a security officer, dial 2317 or go to the information desk in the Atrium (3rd floor).



...to Windham Hospital, where for more than 75 years our focus has been on caring for the people of our communities. **We are here for you!**

We created this map to help you navigate your way around the Hospital. Please let us know if there is anything we can do to improve your visit here.

Windham  
Hospital

A Hartford HealthCare Partner

112 Mansfield Avenue

Willimantic CT 06226

[www.windhamhospital.org](http://www.windhamhospital.org)

Find us on Facebook:  
[www.facebook.com/windhamhospital](http://www.facebook.com/windhamhospital)

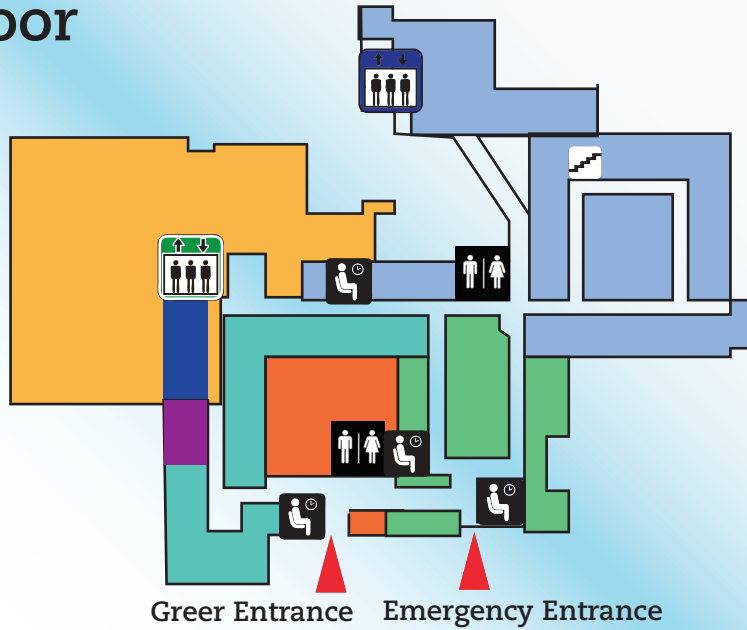
Windham  
Hospital

A Hartford HealthCare Partner



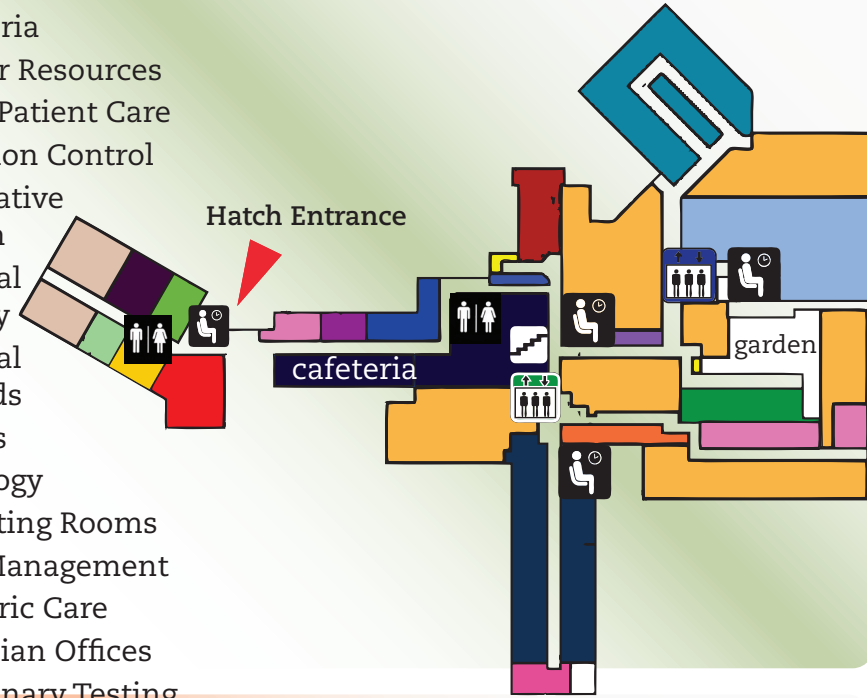
# First Floor

- Breast Imaging
- Cardiac Procedures
- Emergency Services
- Neurology
- Outpatient/Laboratories
- Radiology
- Storage/Mechanical



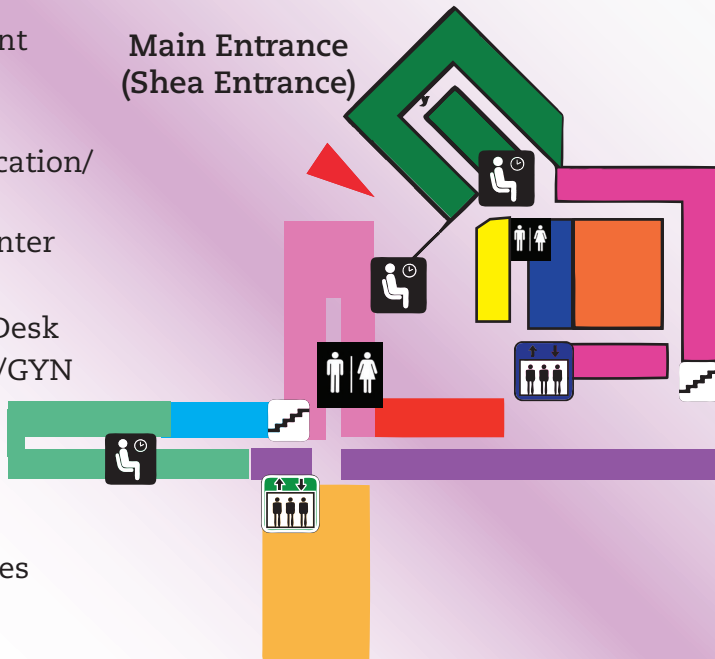
# Second Floor

- Ambulatory Care
- Blood Bank
- Cafeteria
- Cancer Resources
- Greer Patient Care
- Infection Control
- Integrative Health
- Medical Library
- Medical Records
- Offices
- Oncology
- Operating Rooms
- Pain Management
- Pediatric Care
- Physician Offices
- Pulmonary Testing
- Sleep Medicine
- Storage/Mechanical



# Third Floor

- Cashier/Patient Accounts
- Coffee Shop
- Diabetes Education/Nutrition
- Education Center
- Gift Shop
- Information Desk
- Mansfield OB/GYN
- Maternity
- Prenatal Clinic/Women's Health Services



# Fourth Floor

- Chapel
- Intensive Care
- Offices
- Shea Patient Care

